

# Introduction to The Internet



ISP Workshops



# Introduction to the Internet

---

- Topologies and Definitions
- IP Addressing
- Internet Hierarchy
- Gluing it all together

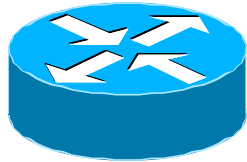
# Topologies and Definitions



What does all the jargon mean?

# Some Icons...

---



Router  
(layer 3, IP datagram forwarding)



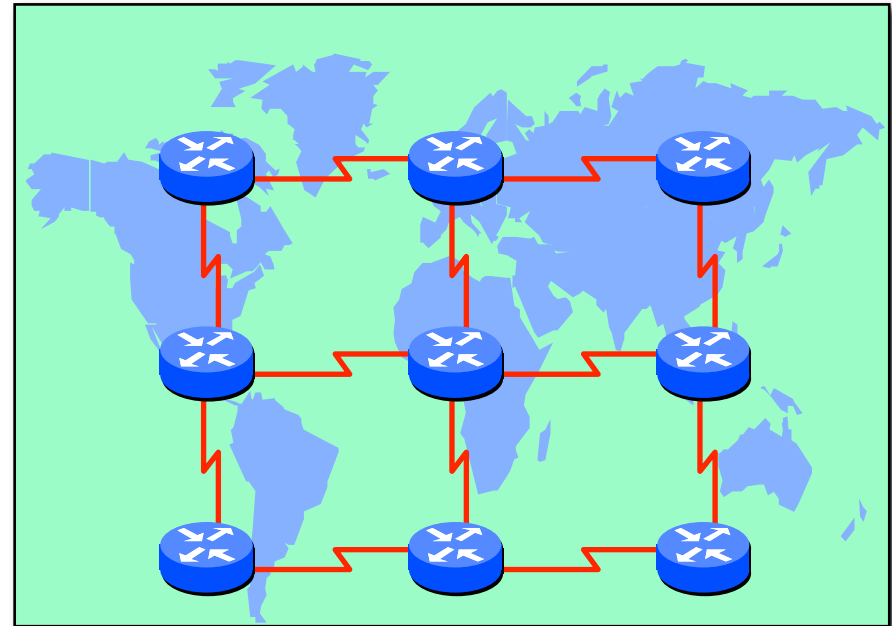
Ethernet switch  
(layer 2, packet forwarding)



Network Cloud

# Routed Backbone

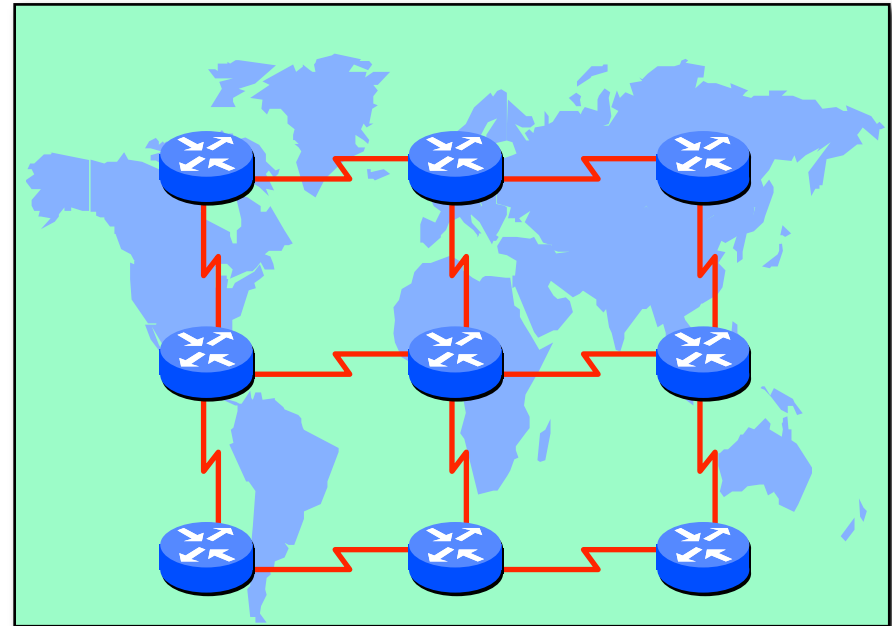
- ❑ ISPs build networks covering regions
  - Regions can cover a country, sub-continent, or even global
  - Each region has points of presence built by the ISP
- ❑ Routers are the infrastructure
- ❑ Physical circuits run between routers
- ❑ Easy routing configuration, operation and troubleshooting
- ❑ The dominant topology used in the Internet today



# MPLS Backbones

---

- ❑ Some ISPs & Telcos use Multi Protocol Label Switching (MPLS)
- ❑ MPLS is built on top of router infrastructure
  - Replaces old ATM technology
  - Tunnelling over IP network
- ❑ Main purpose is to provide VPN services
  - Although these can be implemented with other tunnelling technologies such as GRE



# Points of Presence

---

- PoP – Point of Presence
  - Physical location of ISP's equipment
  - Sometimes called a “node”
- vPoP – virtual PoP
  - To the end user, it looks like an ISP location
  - In reality a back hauled access point
  - Used mainly for consumer access networks
- Hub/SuperPoP – large central PoP
  - Links to many PoPs

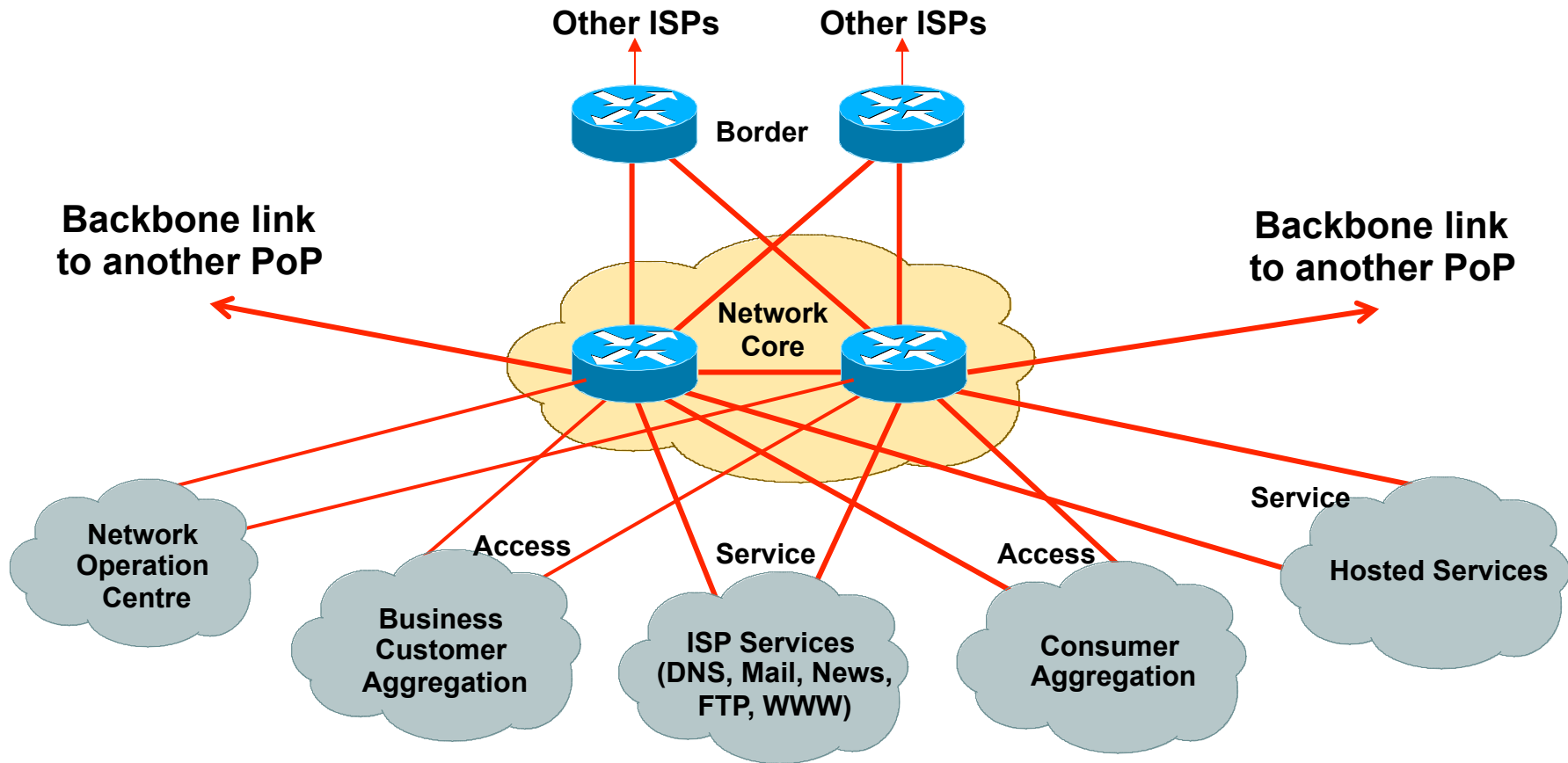
# PoP Topologies

---

- **Core** routers
  - high speed trunk connections
- **Distribution** routers
  - higher port density, aggregating network edge to the network core
- **Access** routers
  - high port density, connecting the end users to the network
- **Border** routers
  - connections to other providers
- **Service** routers
  - hosting and servers
- Some functions might be handled by a single router



# Typical PoP Design

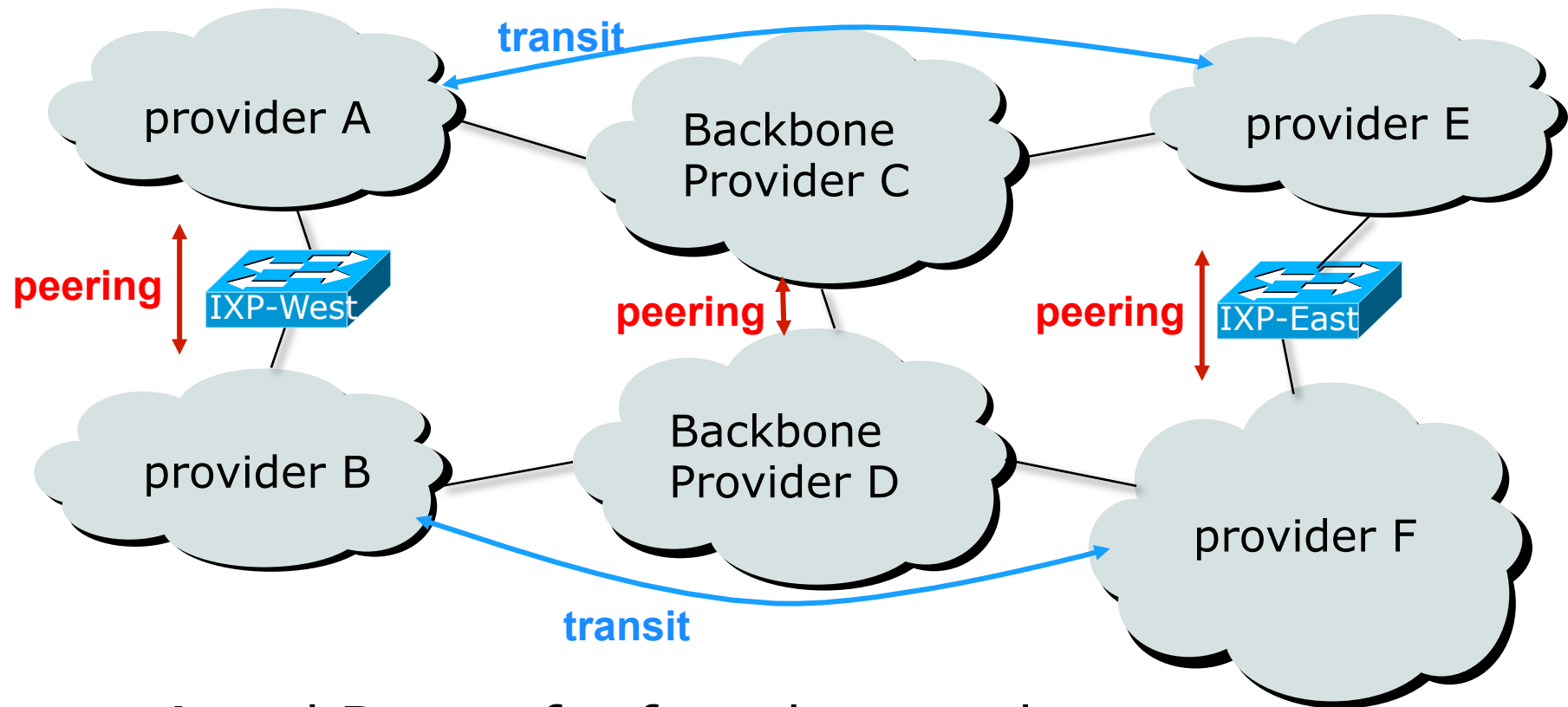


# More Definitions

---

- **Transit**
  - Carrying traffic across a network
  - Usually **for a fee**
- **Peering**
  - Exchanging routing information and traffic
  - Usually **for no fee**
  - Sometimes called **settlement free peering**
- **Default**
  - Where to send traffic when there is no explicit match in the routing table

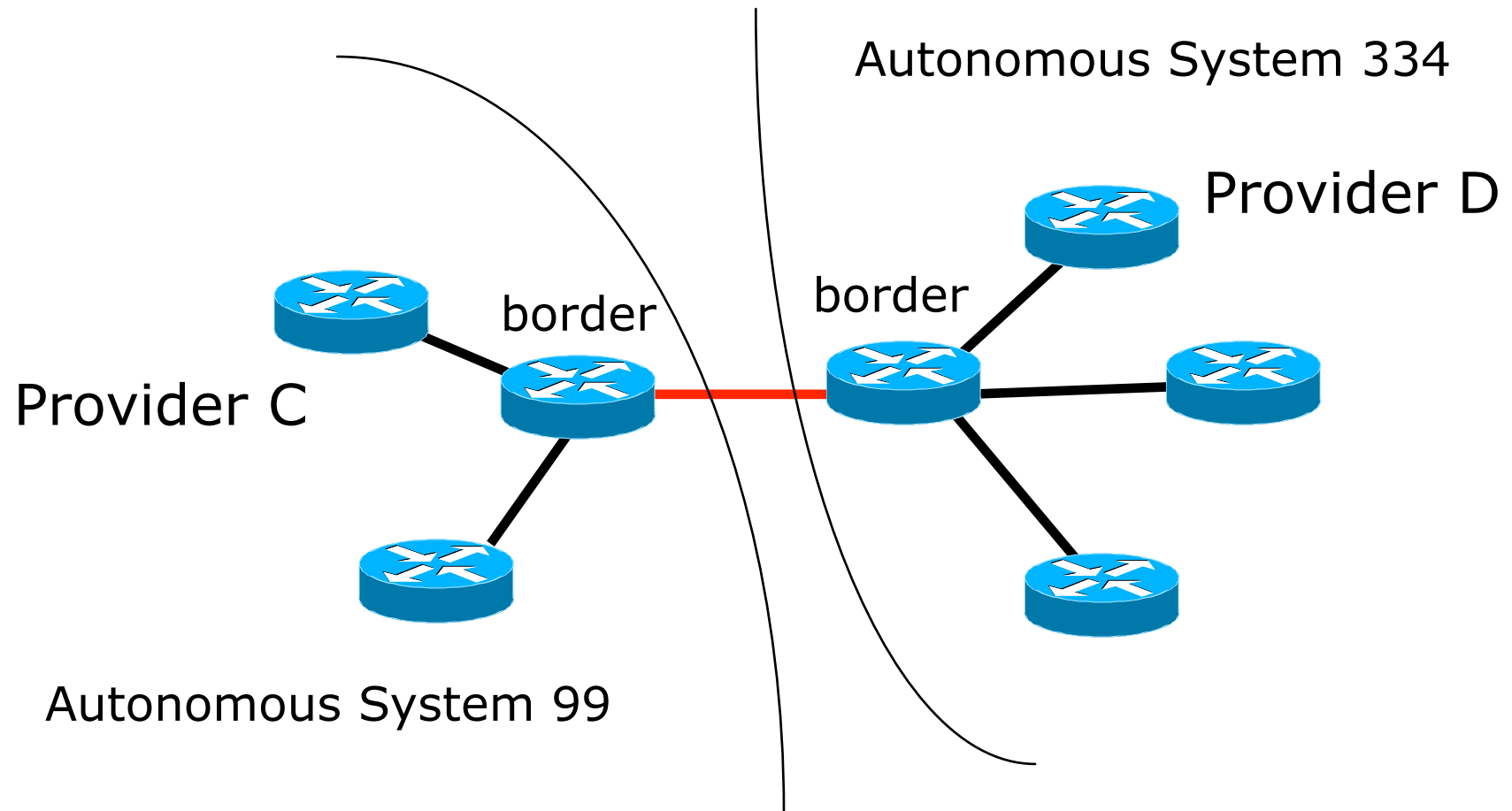
# Peering and Transit example



A and B peer for free, but need transit arrangements with C and D to get packets to/from E and F

# Private Interconnect

---



# Public Interconnect

---

- A location or facility where several ISPs are present and connect to each other over a common shared media
- Why?
  - To save money, reduce latency, improve performance
- IXP – Internet eXchange Point
- NAP – Network Access Point

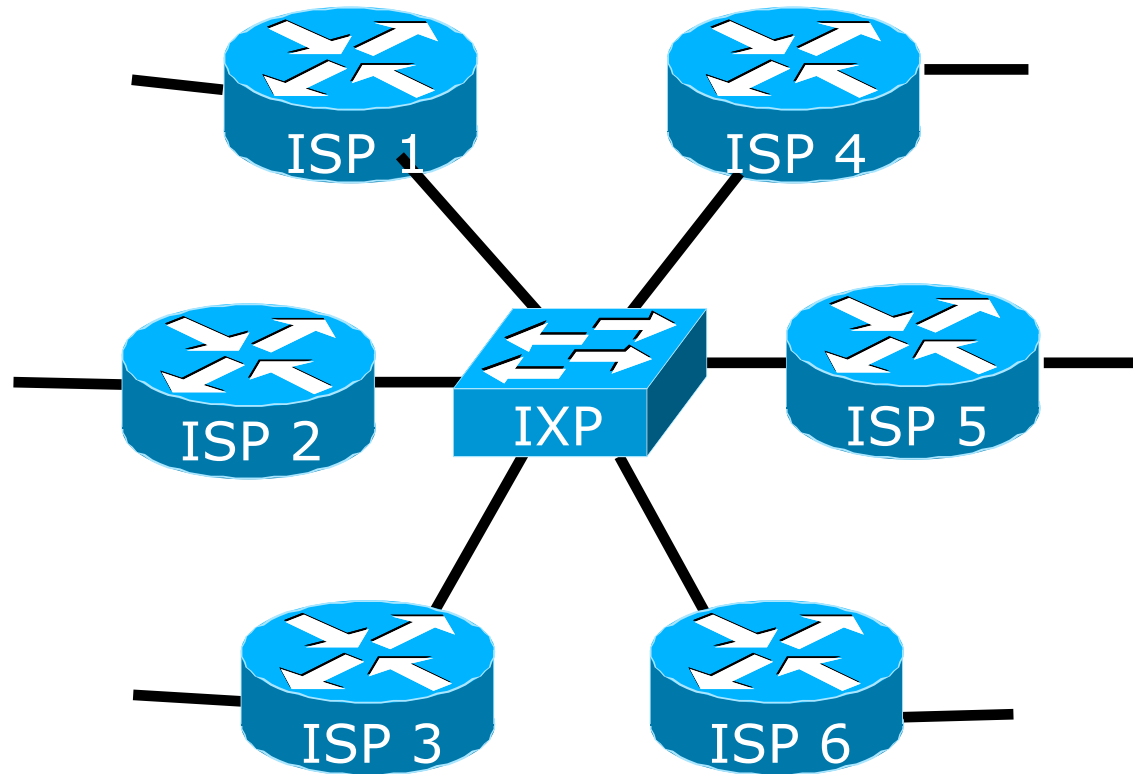
# Public Interconnect

---

- ❑ Centralised (in one facility)
- ❑ Distributed (connected via WAN links)
- ❑ Switched interconnect
  - Ethernet (Layer 2)
  - Technologies such as SRP, FDDI, ATM, Frame Relay, SMDS and even routers have been used in the past
- ❑ Each provider establishes **peering** relationship with other providers at IXP
  - ISP border router peers with all other provider border routers

# Public Interconnect

---



Each of these represents a border router in a different autonomous system

# ISPs participating in Internet

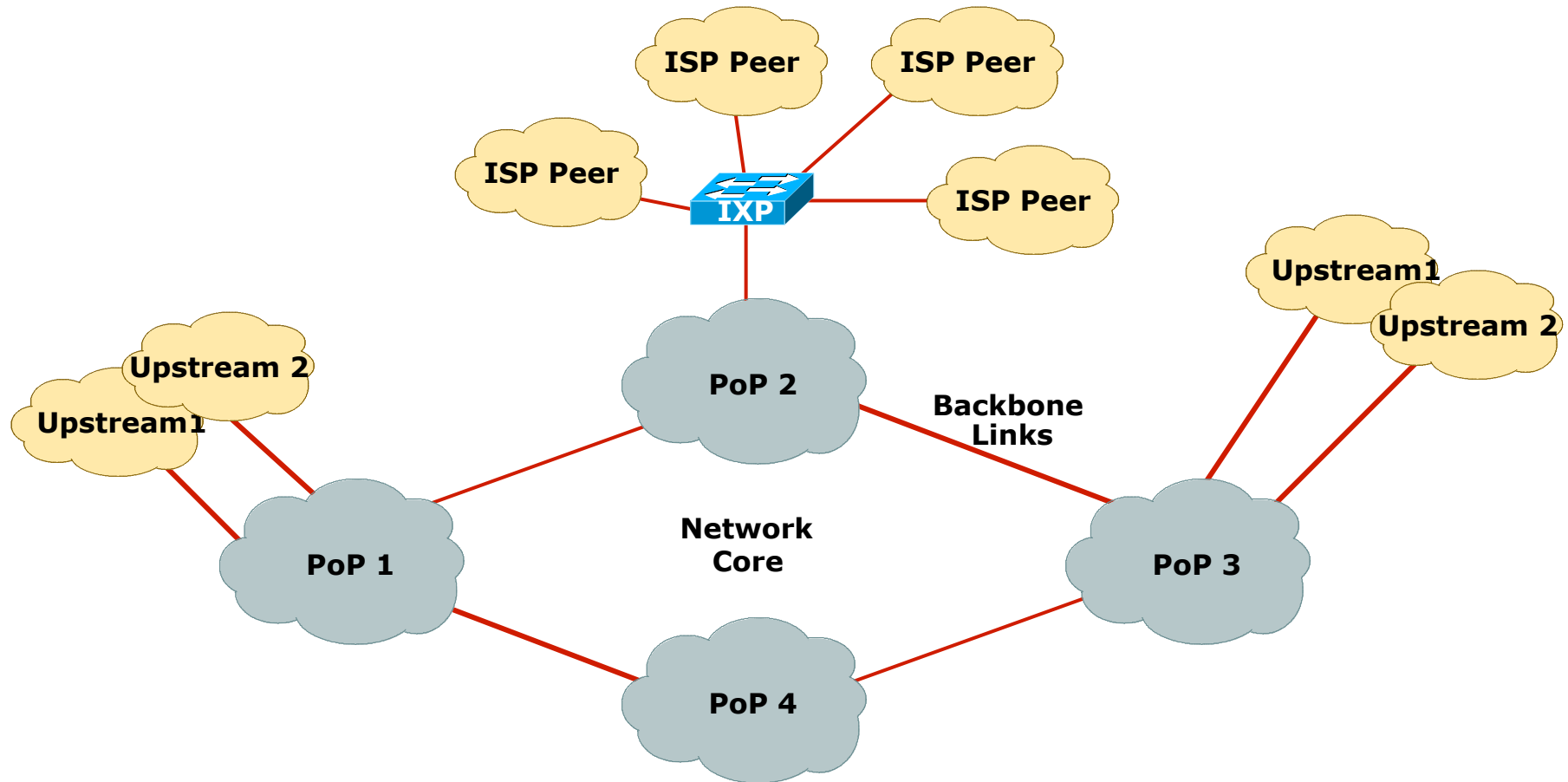
---

- Bringing all pieces together, ISPs:
  - Build multiple PoPs in a distributed network
  - Build redundant backbones
  - Have redundant external connectivity
  - Obtain transit from upstream providers
  - Get free peering from local providers at IXPs



# Example ISP Backbone Design

---



# IP Addressing



Where to get address space and  
who from

# IP Addressing Basics

---

- Internet uses two types of addressing:
  - IPv6 – the new IP protocol
  - IPv4 – legacy IP protocol
- Internet uses classless routing
  - Routers must be CIDR capable
    - **C**lassless **I**nter**D**omain **R**outing
  - No routing assumptions made based on the address block
  - Engineers talk in terms of prefix length
  - For example: 158.43/16 and 2001:db8::/32

# History of IP Addressing

---

- Pre-CIDR (before 1994)
  - Big networks got a class A
  - Medium networks got a class B
  - Small networks got a class C
- The CIDR IPv4 years (1994 to 2010)
  - Sizes of IPv4 allocations/assignments made according to demonstrated need – **CLASSLESS**
- **IPv6 adoption (from 2011)**
  - Network Operators get at least one /32
  - End Sites get /48
  - IANA's free pool is depleted (February 2011) – the size of IPv4 address allocations and assignments is now very limited

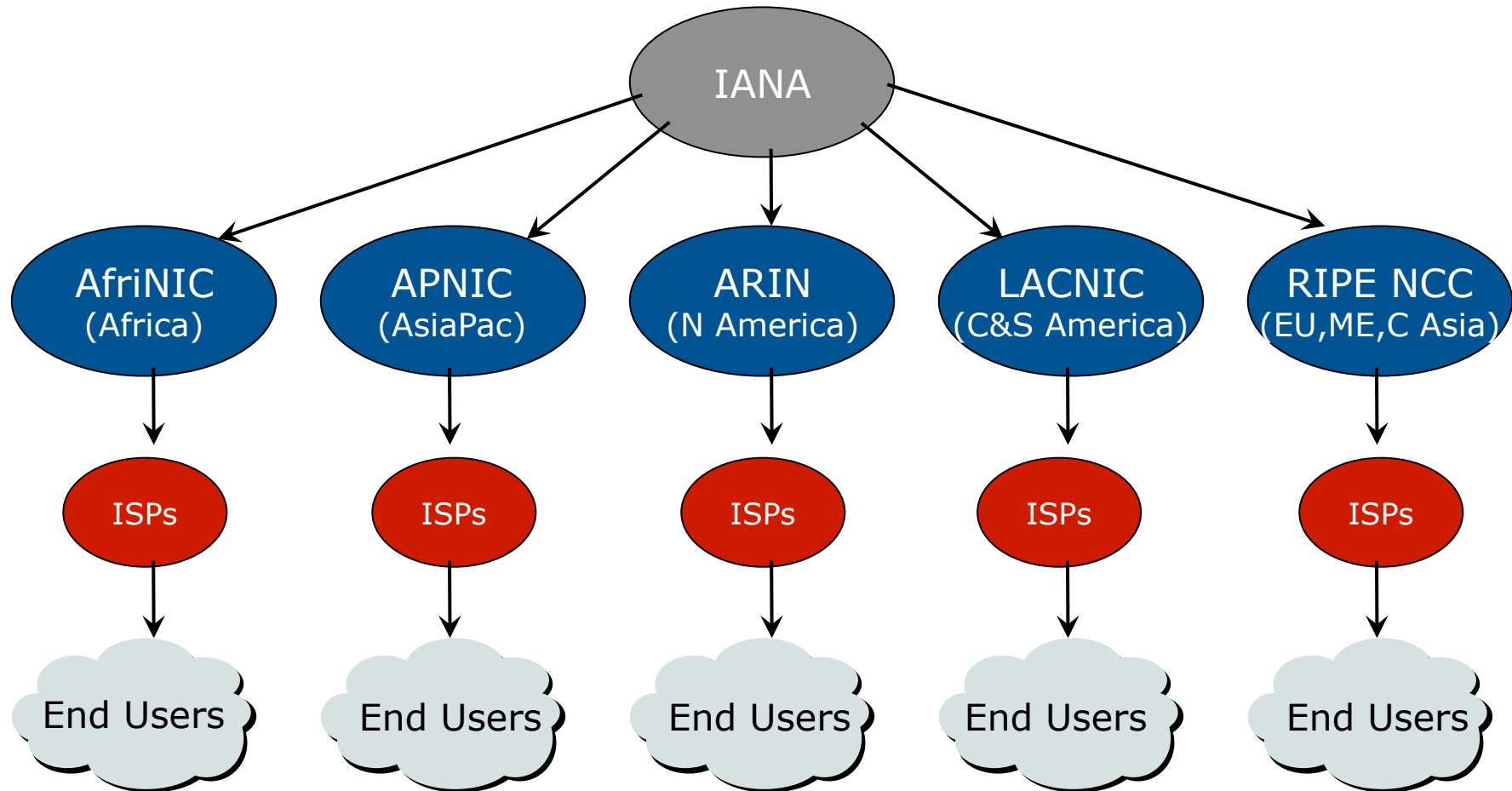
# IP Addressing

---

- IP Address space is a resource shared amongst all Internet users
  - Regional Internet Registries delegated allocation responsibility by the Internet Assigned Numbers Authority (IANA)
  - AfriNIC, APNIC, ARIN, LACNIC & RIPE NCC are the five RIRs
  - RIRs **allocate** address space to ISPs and Local Internet Registries
  - ISPs/LIRs **assign** address space to end customers or other ISPs
- RIRs address distribution:
  - IPv6 is plentiful
  - IPv4 is very limited

# Address delegation hierarchy

---



# Non-portable Address Space

---

- “Provider Aggregatable” or “PA Space”
  - Customer uses RIR member’s address space while connected to Internet
  - Customer has to renumber to change ISP
  - Aids control of size of Internet routing table
  - Need to fragment provider block when multihoming
- PA space is allocated to the RIR member
  - All assignments made by the RIR member to end sites are announced as an aggregate to the rest of the Internet

# Portable Address Space

---

- “Provider Independent” or “PI Space”
  - Customer gets or has address space independent of ISP
  - Customer keeps addresses when changing ISP
  - Is very bad for size of Internet routing table
  - Is very bad for scalability of the routing system
  - → PI space is rarely distributed by the RIRs

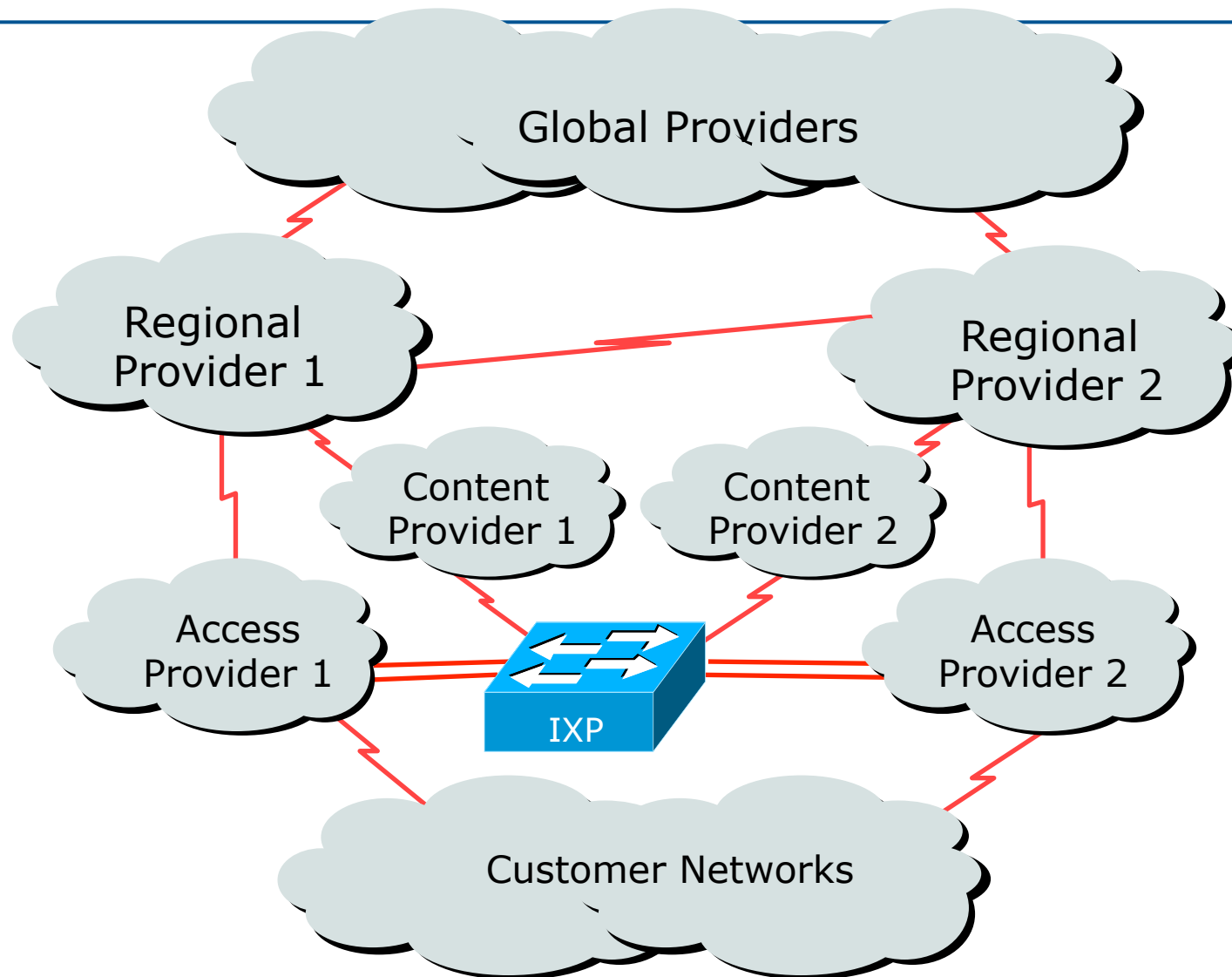


# Internet Hierarchy



The pecking order

# High Level View of the Global Internet

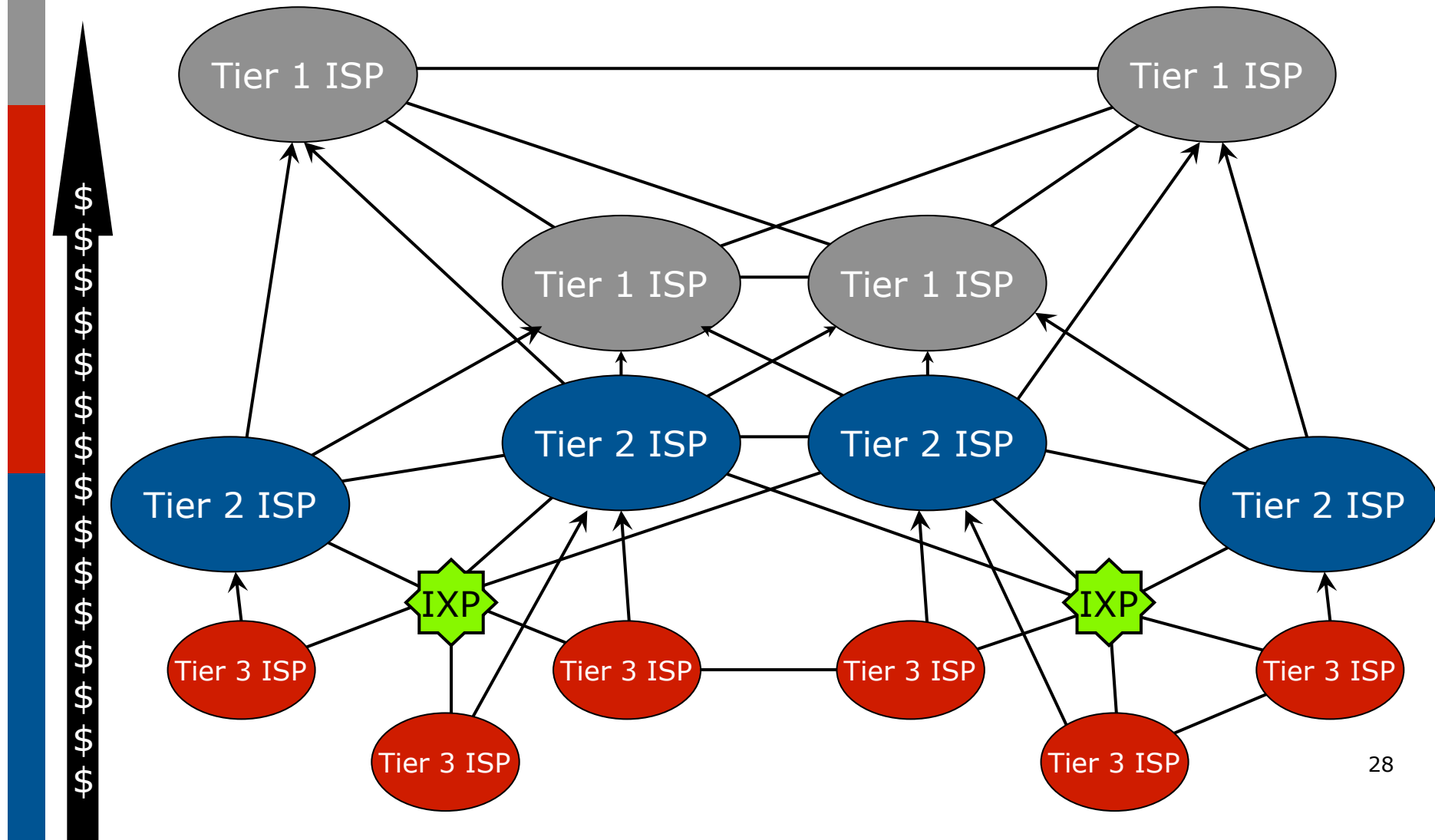


# Detailed View of the Global Internet

---

- Global Transit Providers
  - Connect to each other
  - Provide connectivity to Regional Transit Providers
- Regional Transit Providers
  - Connect to each other
  - Provide connectivity to Content Providers
  - Provide connectivity to Access Providers
- Access Providers
  - Connect to each other across IXPs (free peering)
  - Provide access to the end user

# Categorising ISPs



# Inter-provider relationships

---

- Peering between equivalent sizes of service providers (e.g. Tier 2 to Tier 2)
  - Shared cost private interconnection, equal traffic flows
  - No cost peering
- Peering across exchange points
  - If convenient, of mutual benefit, technically feasible
- Fee based peering
  - Unequal traffic flows, “market position”

# Default Free Zone

---

The default free zone is made up of Internet routers which have explicit routing information about the rest of the Internet, and therefore do not need to use a default route

**NB: is not related to where an ISP is in the hierarchy**

# Gluing it together



# Gluing it together

---

- Who runs the Internet?
  - No one
  - (Definitely not ICANN, nor the RIRs, nor the US,...)
- How does it keep working?
  - Inter-provider business relationships and the need for customer reachability ensures that the Internet by and large functions for the common good
- Any facilities to help keep it working?
  - Not really. But...
  - Engineers keep working together!



# Engineers keep talking to each other...

---

- North America
  - NANOG (North American Network Operators Group)
  - NANOG meetings and mailing list
  - [www.nanog.org](http://www.nanog.org)
- Latin America
  - Foro de Redes
  - NAPLA
  - LACNOG – supported by LACNIC
- Middle East
  - MENOOG (Middle East Network Operators Group)
  - [www.menog.net](http://www.menog.net)

# Engineers keep talking to each other...

---

## □ Asia & Pacific

- APRICOT annual conference
  - [www.apricot.net](http://www.apricot.net)
- APOPS & APNIC-TALK mailing lists
  - [mailman.apnic.net/mailman/listinfo/apops](http://mailman.apnic.net/mailman/listinfo/apops)
  - [mailman.apnic.net/mailman/listinfo/apnic-talk](http://mailman.apnic.net/mailman/listinfo/apnic-talk)
- PacNOG (Pacific NOG)
  - [mailman.apnic.net/mailman/listinfo/pacnog](http://mailman.apnic.net/mailman/listinfo/pacnog)
- SANOG (South Asia NOG)
  - E-mail to [sanog-request@sanog.org](mailto:sanog-request@sanog.org)

# Engineers keep talking to each other...

---

- Europe
  - RIPE meetings, working groups and mailing lists
  - e.g. Routing WG: [www.ripe.net/mailman/listinfo/routing-wg](http://www.ripe.net/mailman/listinfo/routing-wg)
- Africa
  - AfNOG meetings and mailing list
- Caribbean
  - CaribNOG meetings and mailing list
- And many in-country ISP associations and NOGs
- IETF meetings and mailing lists
  - [www.ietf.org](http://www.ietf.org)

# Summary

---

- Topologies and Definitions
- IP Addressing
  - PA versus PI address space
- Internet Hierarchy
  - Local, Regional, Global Transit Providers
  - IXPs
- Gluing it all together
  - Engineers cooperate, common business interests

# Introduction to The Internet



ISP Workshops